

# A Streamlined Approach to Evaluating EdTech

1EdTech Webinar  
January 29, 2026



# Presenters



**Loren Malm**

Vice President for Information  
Technology & Chief Information Officer  
Ball State University



**Sean DeMonner**

Executive Director, Teaching and  
Learning  
Information Technology and Services  
University Michigan



**Emilie Rafal**

Senior Director, Postsecondary  
Education & Workforce  
Programs  
1EdTech Consortium

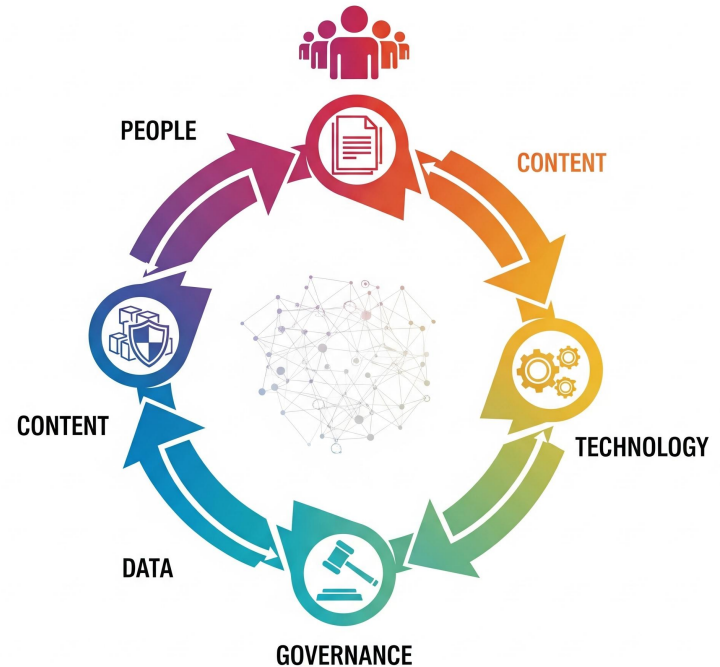


# 1EdTech Consortium

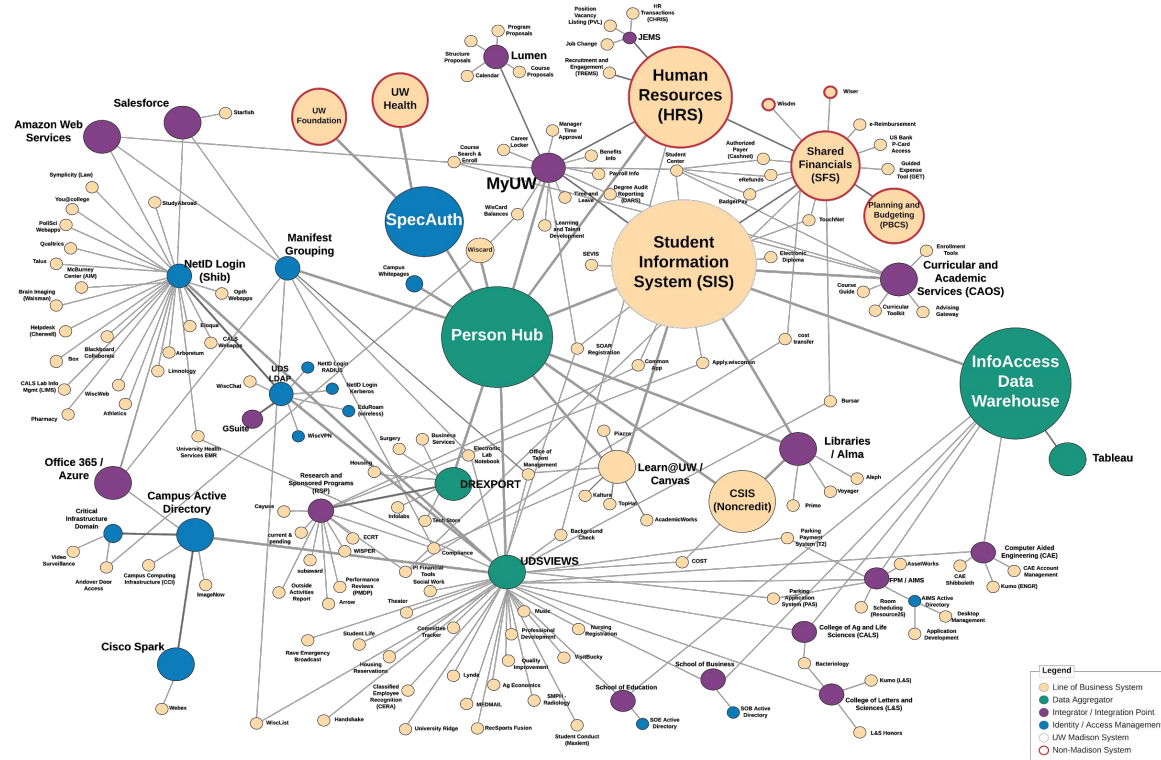
For over 25 years, we've worked to **accelerate educational innovation to power learner potential through open standards & ecosystem leadership**

# What is a learning ecosystem?

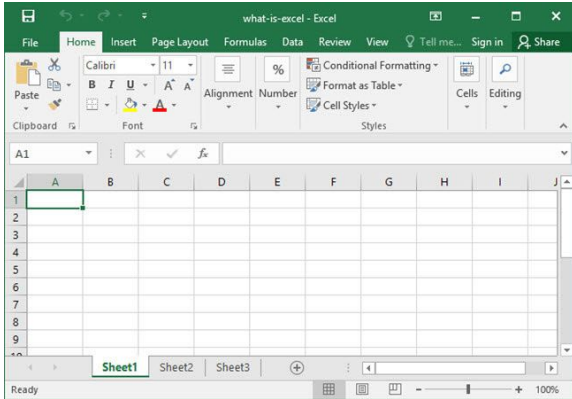
Learning Ecosystems encompass all the components that contribute to the overall learner experience



# Example Learning Ecosystem



# No Single Source for EdTech Management



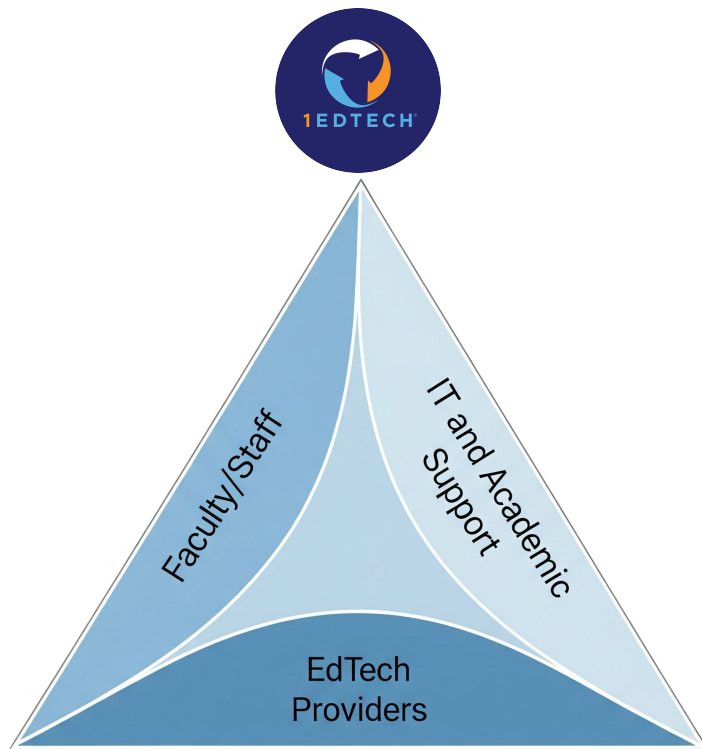
LICENSED SOFTWARE	DETAILS
Redshift Data Warehouse	Columnar-based data repository - High Performance Computing Cluster
Elastic Computing Cloud (EC2)	Windows Cloud Computing - Tableau Server
Elastic Storage Service (S3)	Linux Cloud Computing - replication and data science
Elastic Block Storage (EBS)	Web storage through web services interfaces
Virtual Private Cloud (VPC)	High availability and durability
Internet Protocol Security (IPSEC)	Logical separation and isolation of computing resources for performance and security
CloudChecker	Virtual Private network protecting data in transit
Nagios	Network security
TrendMicro	Healthcheck monitoring for servers and databases
GlueDy	Endpoint protection/anti-virus
Splunk	Backup management
Navposse	Log monitoring for intrusion detection and data integrity
JIRA	Vulnerability and scanning
Tableau	Ticketing, service desk, software management
	Business intelligence front-end
OPEN SOURCE SOFTWARE	DETAILS
R	Windows and Linux - for data science
Python	Windows and Linux - for ETL, replication, and data science
Hadoop	Linux for Replication, flat file extract management
Scopop	Linux for replication, database SQL, flat file extract management
SOS-Berlin / Airflow	Windows for job scheduling
JSON	ETL, Linux and Windows
XML	Code for configuration files, ETL, Tableau on Linux and Windows
Aginity	SQL coding
Postgress Database	Tableau Repository, Scheduling Windows Server
SVN	Version control Linux and Windows
Crontab	Linux scheduling tool - used for replication and maintenance
DB	Visualization software integrated with Tableau server



# What should we expect from our learning ecosystem?

1. Trust
2. Transparency
3. Interoperability

Courtesy: Loren Malm, CIO and VP of IT at Ball State University



# TrustEd Apps Hierarchy of Trust

**Faculty/Staff** – the faculty and staff view the dashboard we put together, and can see which applications are approved for use institutionally and can request items they don't see. This catalog is where the “rubber meets the road” because faculty and staff are making selections out of this catalog.

**IT and Academic Technology Support** – This is the layer where we're building the institutional dashboard that faculty and staff will use. By including tools in the catalog, we're indicating to our faculty and staff that we support these tools.

**EdTech Providers** – Providers can use the Trusted App Directory to see what other competing products are listed, and see precisely how competing products “stack up” in terms of the issues we care about most.





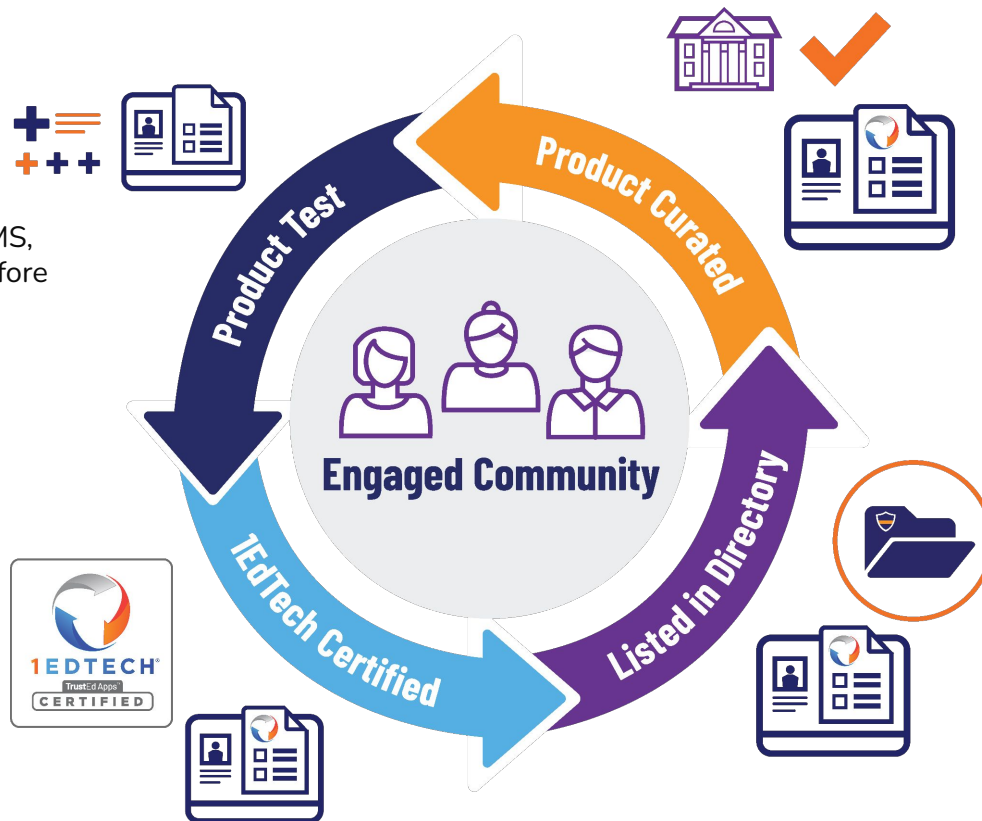
# TAMS: Connected Community Vision

## Edtech Supplier

Updates products in TAMS, then tests in sandbox before certification/release.

## Edtech Supplier

Product certified to 1EdTech standards, ready for release.



## Institution

Faculty can browse approved products for use in teaching and learning, or suggest new tools.

## Edtech Supplier & Institution

Product listed in TrustEd Apps Directory, Institution selects it for use.





# TrustEd Apps<sup>TM</sup> Rubrics

Data Privacy



13,500+  
Vetted Apps!

Accessibility



NEW!

Security  
Practices



NEW!

Generative AI  
Data (Privacy)



NEW!



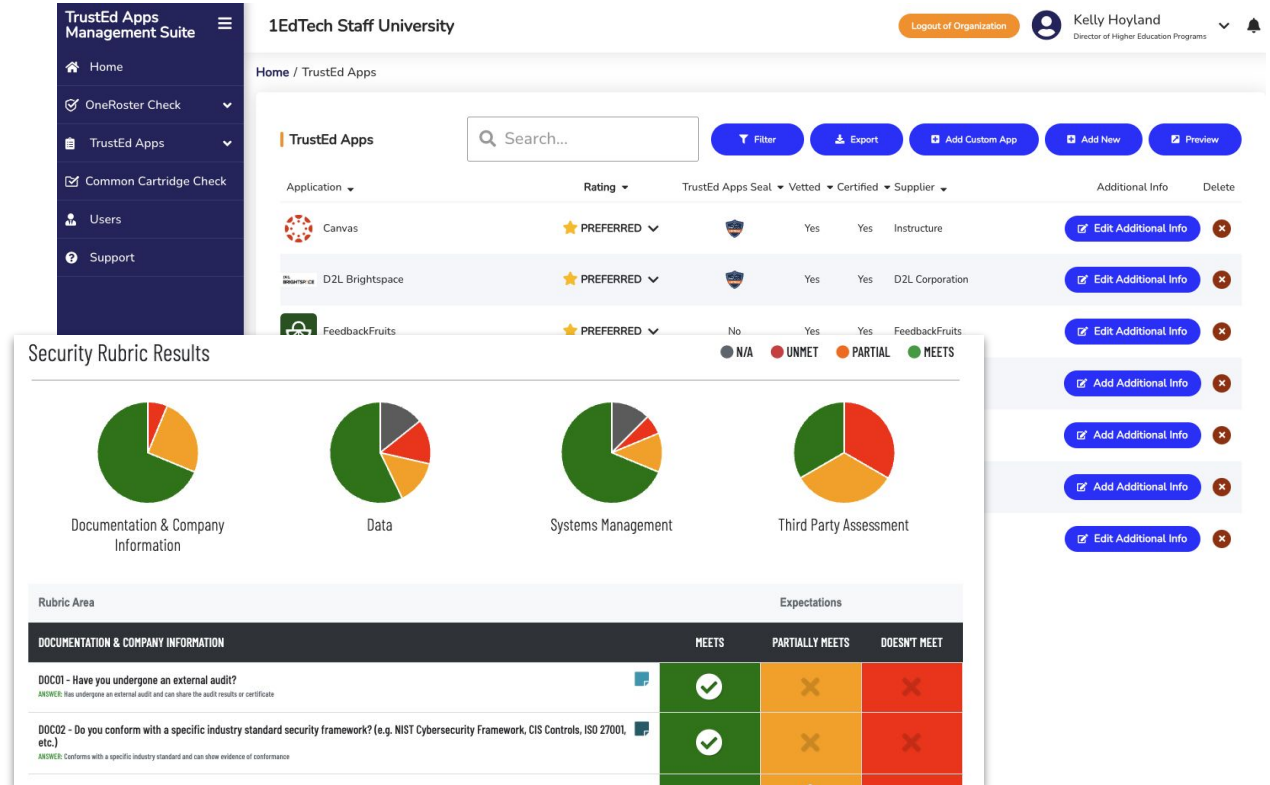
Procure Products that are TrustED

[www.trustedapps.org](https://1ed.tech/-_Wb)

Product Directory: [https://1ed.tech/-\\_Wb](https://1ed.tech/-_Wb)

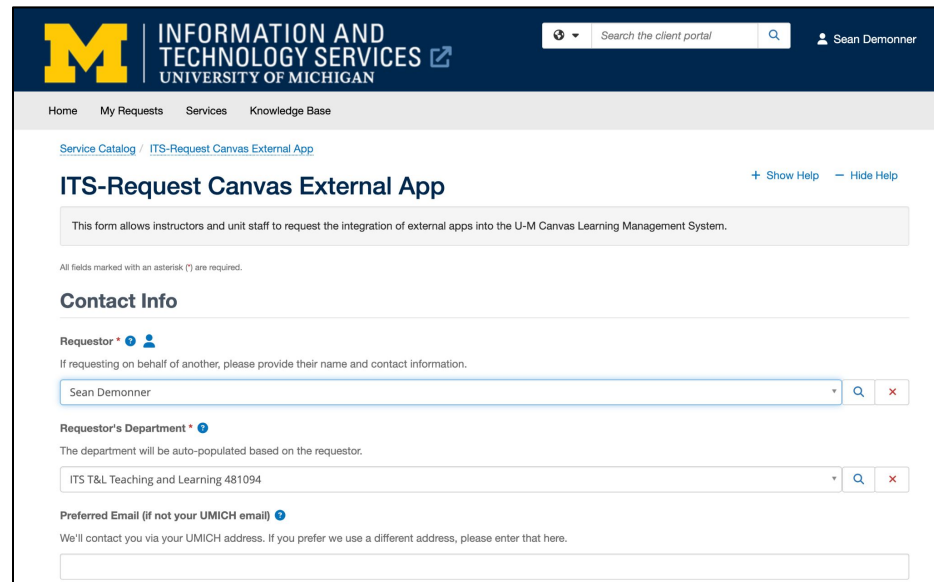
# TAMS Dashboard- Comprehensive EdTech Management

- ✓ User-friendly dashboard
- ✓ Quick glance results
- ✓ Add notes for stakeholders
- ✓ Track licensing & support information
- ✓ Promote a TrustEd Ecosystem



# Current App Request and Verification Process

1. Faculty, academic unit request
2. Compliance validation:
  - a. Integration standards
  - b. Data security, privacy (HECVAT, SOC-2, DSA)
  - c. Accessibility (VPAT, test)
3. Trust, but verify
4. Min 2-4 month lead time




The screenshot shows the 'ITS-Request Canvas External App' form on the University of Michigan Information and Technology Services portal. The header includes the University of Michigan logo and the text 'INFORMATION AND TECHNOLOGY SERVICES UNIVERSITY OF MICHIGAN'. A search bar and a user profile for 'Sean Demonner' are in the top right. The navigation bar has links for 'Home', 'My Requests', 'Services', and 'Knowledge Base'. The breadcrumb trail shows 'Service Catalog' and 'ITS-Request Canvas External App'. The form title is 'ITS-Request Canvas External App' with a '+ Show Help' and '- Hide Help' link. A description states: 'This form allows instructors and unit staff to request the integration of external apps into the U-M Canvas Learning Management System.' A note says 'All fields marked with an asterisk (\*) are required.' The 'Contact Info' section includes a 'Requestor' field with a user icon, a dropdown menu showing 'Sean Demonner', and a 'Requestor's Department' field with a dropdown menu showing 'ITS T&L Teaching and Learning 481094'. A 'Preferred Email' field is also present with a note: 'We'll contact you via your UMICH address. If you prefer we use a different address, please enter that here.'



via Instructor View  
by way of the LMS



 Suggest App

 TrustEd Apps  
Catalog

APPROVED

Access

Pearson

By Pearson Education

APPROVED

Cengage

LMS

Integration Gateway

By Cengage

APPROVED

Adobe

Creative Cloud

By Adobe Inc.

APPROVED

Adobe

Express for Education

By Adobe Inc.

APPROVED

Alexander Street

By ProQuest

APPROVED

Annoto

By Annoto

APPROVED

CAEN

Lecture

TrustEd Apps by 1EdTech

Sort By

Certified

Legend

Filter

PREFERRED

☐

APPROVED

☒

APPROVED LIMITED

☐

REVIEWED

☐

UNDER REVIEW

☐

DENIED

☐

TrustEd Apps Seal

☐

Vetted

☐

Certified

☐

Technical Notes

☐

Instructional Notes

☐

## Rubric Area

## Expectations

### DOCUMENTATION & COMPANY INFORMATION

### MEETS

### PARTIALLY MEETS

### DON'T MEET

**DOC01 - Have you undergone an external audit?**

**ANSWER:** Has undergone an external audit and can share the audit results or certificate

**DOC02 - Do you conform with a specific industry standard security framework? (e.g. NIST Cybersecurity Framework, CIS Controls, ISO 27001, etc.)**

**ANSWER:** Conforms with a specific industry standard and can show evidence of conformance

**DOC03 - Does your organization have a documented data privacy policy?**

**ANSWER:** Yes

**DOC04 - Do you have a documented, and currently implemented, employee onboarding and off boarding policy?**

**ANSWER:** Yes

**DOC05 - Do you have a well documented Disaster Recovery Plan (DRP) that is tested annually?**

**ANSWER:** Yes

**DOC06 - Do you have a documented and currently followed change management process (CMP)?**

**ANSWER:** Has a fully documented process & process is followed and includes a change log

se://site:imselhal.org/security-policies/app-vetting-profile-for-canvas/424142?check\_logged\_in=1#doc08\_dedicated\_info\_sec\_note



# Best Practices

- Technology should empower the strategy of the institution
- You are in drivers' seat and the CEO of your own technology
- Define requirements and non-negotiables with your stakeholder group
- Engage CIO/IT leaders early in the process
  - Tools don't solve people process issues
  - Technology can't deliver strategies for retention; they can support the process
  - CIOs can provide insight into how your tool will fit the institutional technology infrastructure



# Getting Started in TAMS



Not a member? Reach out to [erafal@1edtech.org](mailto:erafal@1edtech.org) learn more about 1EdTech Membership.

Already a member, but not yet using TAMS? Set up a [demo](#).

Want to get more involved with the community? Contact [erafal@1edtech.org](mailto:erafal@1edtech.org) to join the Trusted Apps Advocacy Group.

<https://1ed.tech/tamsdemo>





# 1EDTECH LEARNING IMPACT CONFERENCE

June 1-3, 2006 | San Francisco, CA

